



9282PWL1FV

400A power lock cable mount socket, single pole, SOURCE, brown



9282PWL2FV

400A power lock cable mount socket, single pole, SOURCE, black



9282PWL3FV

400A powerlock cable-mount socket, single pole, SOURCE, grey



9282PWNTFV

400A power lock cable mount socket, single pole, SOURCE, blue



9282PWGDFV

400A power lock cable mount socket, single pole, SOURCE, green



9282PWL1FP

400A power lock panel mount socket, single pole, SOURCE, brown



9282PWL2FP

400A power lock panel mount socket, single pole, SOURCE, black



9282PWL3FP

400A powerlock panel-mount socket, single pole, SOURCE, grey



9282PWNTFP

400A power lock panel mount socket, single pole, SOURCE, blue



9282PWGDFP

400A power lock panel mount socket, single pole, SOURCE, green



9282PWL1MV

400A power lock cable mount plug, single pole, DRAIN, brown



9282PWL2MV

400A power lock cable mount plug, single pole, DRAIN, black



9282PWL3MV

400A powerlock cable-mount plug, single pole, DRAIN, grey



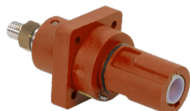
9282PWNTMV

400A power lock cable mount plug, single pole, DRAIN, blue



9282PWGDMV

400A power lock cable mount plug, single pole, DRAIN, green



9282PWL1MP

400A power lock panel mount plug, single pole, DRAIN, brown



9282PWL2MP

400A power lock panel mount plug, single pole, DRAIN, black



9282PWL3MP

400A powerlock panel-mount plug, single pole, DRAIN, grey



9282PWNTMP

400A power lock panel mount plug, single pole, DRAIN, blue



9282PWGDMP

400A power lock panel mount socket, single pole, DRAIN, green

Technical Data	
Max current rating	400A
Max rated voltage to ground	2Kv AC / 3Kv DC
Min flashover	9.5Kv AC/DC (peak)
Insulating resolution	> 5MΩm @ 500 VDC
Working temp.	-30°C / +125°C
Set screw	120 mm ²
Fire reaction	Flame-retardant up to IP67 (correct coupling)
IP rating	IP2X
Electric shock protection	IP2X

